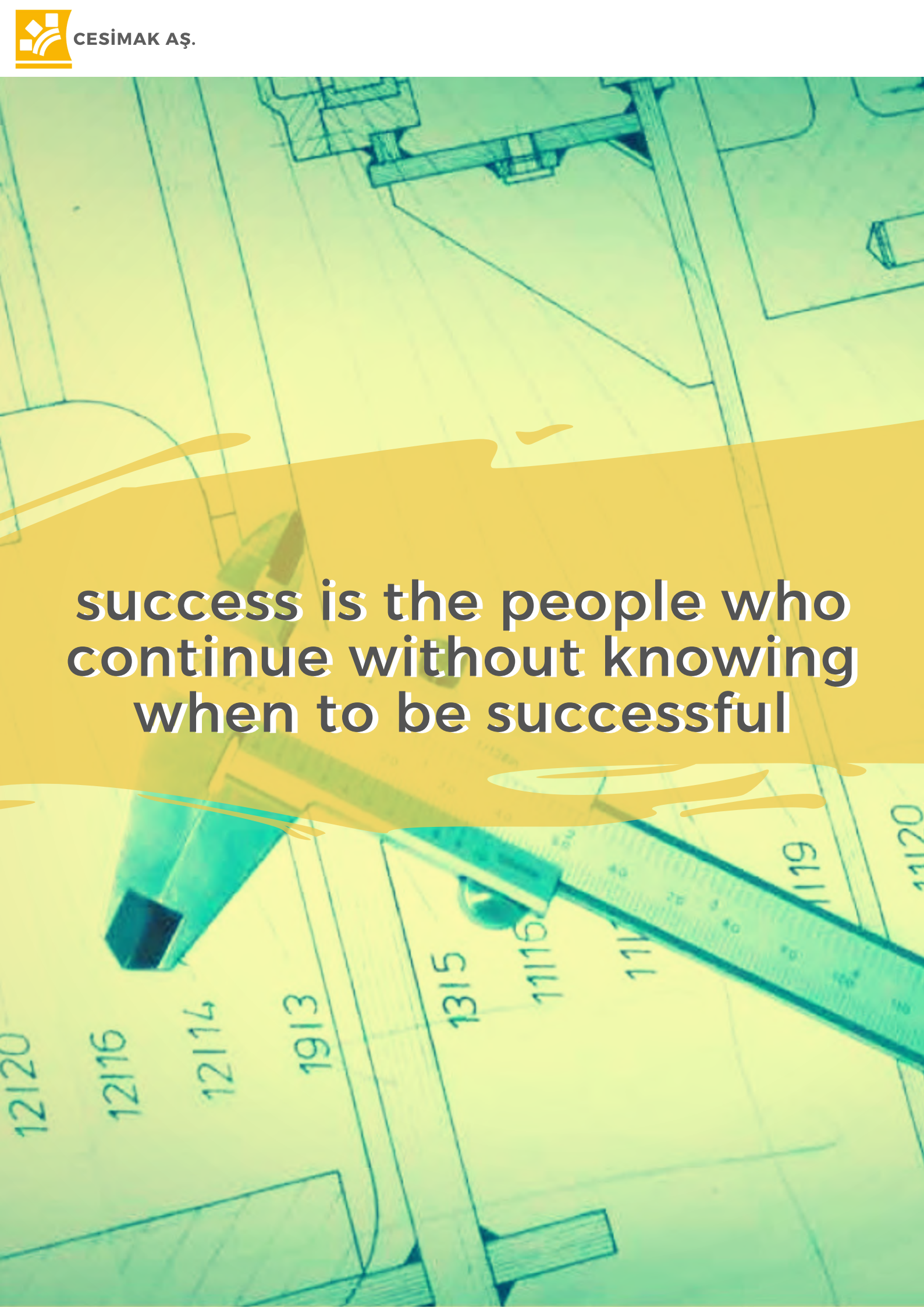


# CESIMAK

## 2020 CATALOGUE

EVERY WORK  
IS NEW BEGINNING



**success is the people who  
continue without knowing  
when to be successful**



# WHO WE ARE

CESİMAK Heavy Industrial Machine Manufacturer Co.AS, founded in 1990, have serving their domestic and foreign customers the best engineering consultancy and manufacturing of machine and spare parts made by Carbon , Alloy and Stainless Steel and Casting Products.

CESİMAK has been metal working for ; Roller Mill, Cement,Mining, Energy, Paper, Paint, Recycling, Chemical Fertilizer Industries

Our Products;

- Gears, GearBoxes, Shafts
- Rolling Machines, Cooling Platforms,Roll Mill Stands, Road Groups, Cold Shear, Fly Shear,Oscillation and Withdrawal Straighter Machines, Dummy Bar Equipment,Billet Transfer Role Groups,Towing-Return Groups
- Stainless Steel Shafts and Equipments , Impellers
- Crushers, hardest Blades

We offer;

- Complete solution, mechanical and electrical
- Engineering, Re-engineering
- Maintenance
- Welding , Assembling
- Turning , Milling , Drilling
- Gear Cuting , Grinding

**Capacity;** CESİMAK declares a number of approx. 30 employees mainly divided as follows:

Production dept : 20 persons

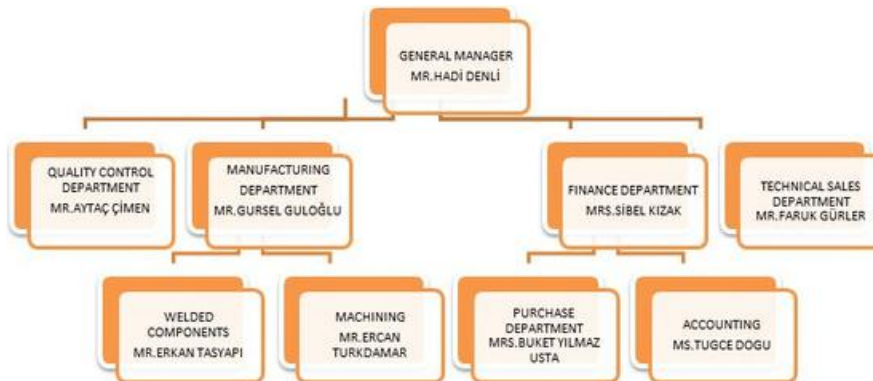
Quality Dept: 2 persons

Project ,Marketing , Sales: 1 person

Purchasing: 1 person

Warehouse and logistics.:1 person

Other Administrative figures: total number of 2 welder who has certified by international authority.



# Certification

Cesimak makes work based on the integrated management system as given below.

3 *quality management certificates*

2 *welder certificates*



# Main Clients

CESİMAK acts directly on the Iron steel, cement, recycling, automotive, chemical, energy industry and manufactures spare parts, repairs, alteration, new production from customer drawing and reengineering.

87%

*revenue from domestic firms*

13%

*revenue from export*

- KOCAER HADDECİLİK ALİĞA-İZMİR (Iron and steel)
- HABAŞ A.Ş ALİĞA-İZMİR ( Iron and Steel )
- ÇOLAKOĞLU HADD.DİLOVASI –İSTANBUL ( Iron And Steel)
- TOSYALI HOLDİNG AS (ALGERIA) ( Iron and Steel)
- KARDEMİR KARABÜK A.Ş KARABÜK (Iron and Steel)
- KARDEMİR HADDECİLİK A.K ALİĞA –İZMİR (Iron and Steel)
- BATIÇİM BATI ANADOLU A.Ş BORNOVA –İZMİR (Cement)
- BATISÖKE BATI ANADOLU A.Ş SÖKE – AYDIN (Cement)
- KATEK AĞAOĞLU A.Ş –UŞAK (Receycling )
- MAXİON JANTAŞ JANT SAN.A.Ş MANİSA(Automotive ,rim)
- MAXİON İNCİ JANT SAN.A.Ş MANİSA (Automotive ,rim)
- BAGFAS BANDIRMA GÜBRE FAB.A.Ş BANDIRMA (Fertilizer)
- APT COUPLING GLOBAL (Holland)
- JORDAN PHOSPHATE MINING COMPANY (Jordan)
- GERD WOLF MACHINERY CO LTD (GERMANY)
- NIPPON JORDAN FERTILIZER CO.W.L.L
- JINDAL STEEL AND POWER LIMITED (INDIA)

# Total Operative Surface

- A total operative surface is 2000m<sup>2</sup>
- Total declared production capacity: 1.305 tones yearly
- 5 various overhead cranes having max.lifting capacity of 12 tons and max.under hook height of 7mt

**2000** meter  
square

*total working area*

**80%**

*machining*

**20%**

*welding  
assembling*





# Main Products

- Gears, mills, shafts, gear boxes, flyshear, cold shear, roll mill assembly, cooling path,
- Recycling press and shredder machinery for metal,
- Shredder machinery for plastic and rubber,
- Crusher and sand sieving machinery for cement industry

**2.8K** tones

*yearly production*

**67%**

*spare parts*

**33%**

*turnkey machine*



**Gear Shaft  
Production**



**Gear Shaft  
Production**







# Main Products

- Gears, mills, shafts, gear boxes, flyshear, cold shear, roll mill assembly, cooling path,
- Recycling press and shredder machinery for metal,
- Shredder machinery for plastic and rubber,
- Crusher and sand sieving machinery for cement industry

*industry share of spare parts*

**50%** *iron steel*

**30%**

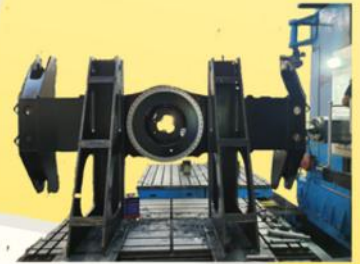
*mining*

**15%**

*energy*



**Welding and Machining  
for Heavy Industrial  
Machine Spare Parts**





# Main Products

- Gears, mills, shafts, gear boxes, flyshear, cold shear, roll mill assembly, cooling path,
- Recycling press and shredder machinery for metal,
- Shredder machinery for plastic and rubber,
- Crusher and sand sieving machinery for cement industry

*industry share of turnkey machine*

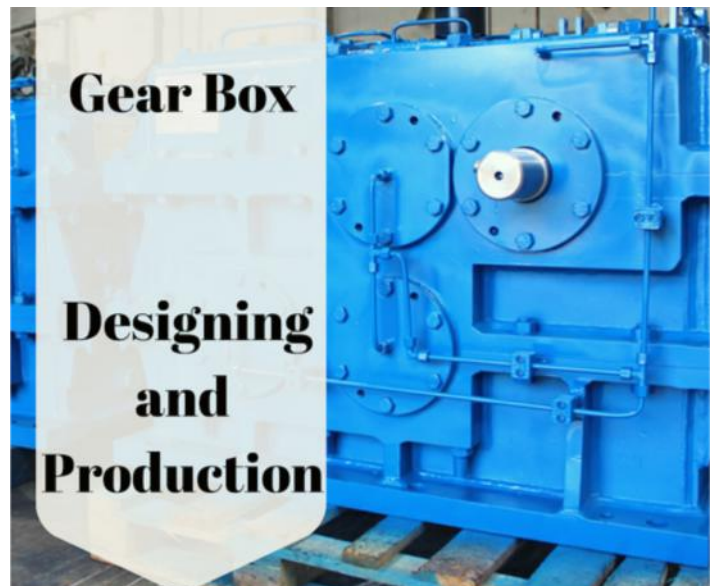
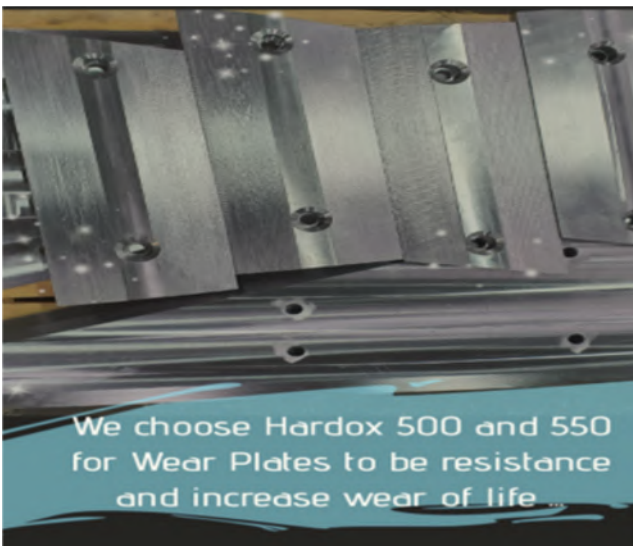
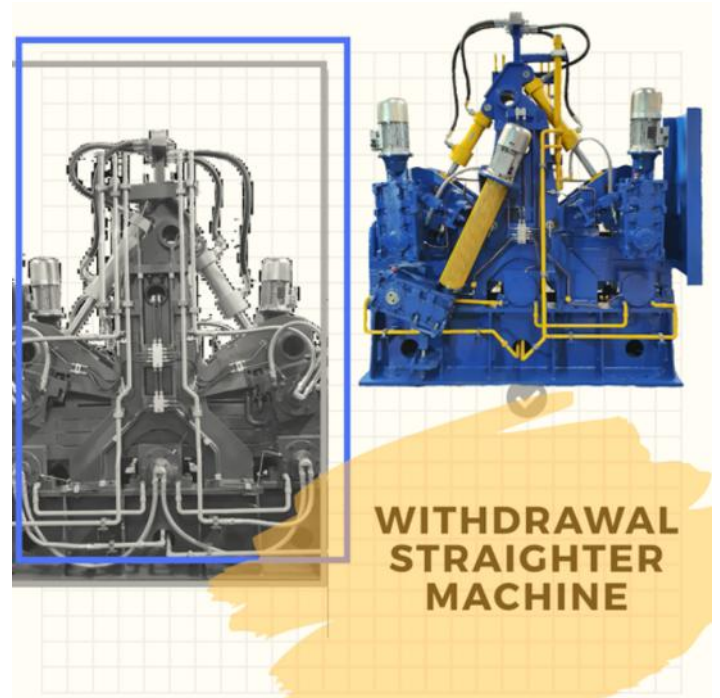
**40%** *iron steel*

**30%**

*mining*

**30%**

*recycling*



# Machine Parts

1600 m2 covered area served various machine as follows.

- Lathes
- Milling and Boring Machine
- Gear cutting machines
- Gear surface threading machinery
- Welding machines
- Measuring devices
- Cranes
- Forklift

# 14

*CNC Machines*

# 19

*Universal Machines*

## UNIVERSAL HORIZONTAL LATHES MACHINES

Shenyang	Machining Diameter	ø 1250 mm
	Max.Machining Lenght	5000 mm
Bulgaria -CU 730	Machining Diameter	ø 720 mm
	Max.Machining Lenght	5000 mm
TOS	Machining Diameter	ø 920 mm
	Max.Machining Lenght	3000 mm
TOS	Machining Diameter	ø 720 mm
	Max.Machining Lenght	4000 mm
TOS SN 71 C	Machining Diameter	ø 720 mm
	Max.Machining Lenght	3000 mm
Bulgaria -CU 11 MS	Machining Diameter	ø 510 mm
	Max.Machining Lenght	2000 mm

## UNIVERSAL HORIZONTAL LATHES

MAX. Machining Diameter	ø 2180 mm
Max.Machining Lenght	1000 mm
MAX. Machining Diameter	ø 1000 mm
Max.Machining Lenght	1000 mm
MAX. Machining Diameter	ø 1400 mm
Max.Machining Lenght	1000 mm

## CNC VERTICAL LATHES

Star	MAX. Machining Diameter	ø 450 mm
	Max.Machining Lenght	1000 mm
Daewoo	MAX. Machining Diameter	ø 460 mm
	Max.Machining Lenght	1400 mm
Shenyag	MAX. Machining Diameter	ø 800 mm
	Max.Machining Lenght	3000 mm

## CNC VERTICAL PROCESS MACHINE

AWEA MV 1100 D	X: 1100 mm , Y: 600 mm , Z: 600 mm
AWEA 3M 1600	X: 1600 mm , Y: 800 mm , Z: 800 mm
DAHLIA	X: 1600 mm , Y: 800 mm , Z: 800 mm

## GEAR CUTTING MACHINES

UMO	max.Machining Diameter	ø 1500 mm
	Hight	330 mm
UMO	max.Machining Diameter	ø 1580 mm
	Hight	330 mm
UMO	max.Machining Diameter	ø 800 mm
	Hight	330 mm
FELLOW	max.Machining Diameter	ø 560 mm
	Hight	120 mm
	max.module	8

## GEAR GRINDING MACHINES

max.Machining Diameter	ø 500 mm
max.module	8
max.Machining Diameter	ø 600 mm
max.module	8
max.Machining Diameter	ø 1750 mm
max.module	14
max.Machining Diameter	ø 3000 mm
max.module	25
max.Machining Diameter	ø 1280 mm
max.module	12

## CNC GEAR GRINDING

max.Machining Diameter	ø 1800 mm
max.module	18

## BOHRWERK VE CNC BOHRWERK

UNION turntable	X: 2500 mm , Y:1600 mm , Z: 500 mm , W:1000 mm
-----------------	--

UNION -CNC turntable	X: 1000 mm , Y:1000 mm , Z: 700 mm , W:1000 mm
----------------------	--

UNION -CNC turntable	X: 2000 mm , Y:1500 mm , Z: 800 mm , W:600 mm
----------------------	---

SKODA W160H -CNC turntable	X: 8000 mm , Y:3000 mm , Z: 1500 mm turntable :5000x3000 , fix table: 3000x5000
----------------------------	--

Doosan CNC turntable	X: 4000 mm , Y:6000 mm , Z: 3000 mm
----------------------	-------------------------------------

## DOUBLE COLON CNC

X:4200 mm , Y : 2100+300 mm , Z:1000 mm
---



# Welding

Welding processes used in production are qualified as also the welders/operators according to EN15614

3 Gas Metal Arc Welding

The Welding Machines used in production are primary international brands:

- Expressweld
- Cloos

*welding process share*

**60%** *assembly*

**30%**

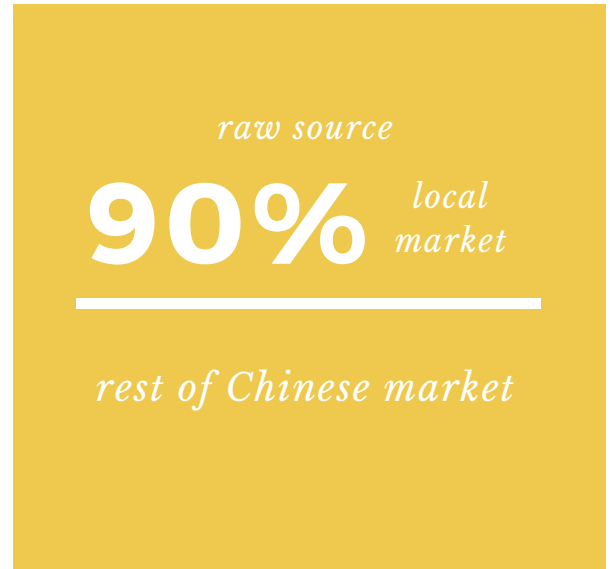
*fullfilled*

**10%**

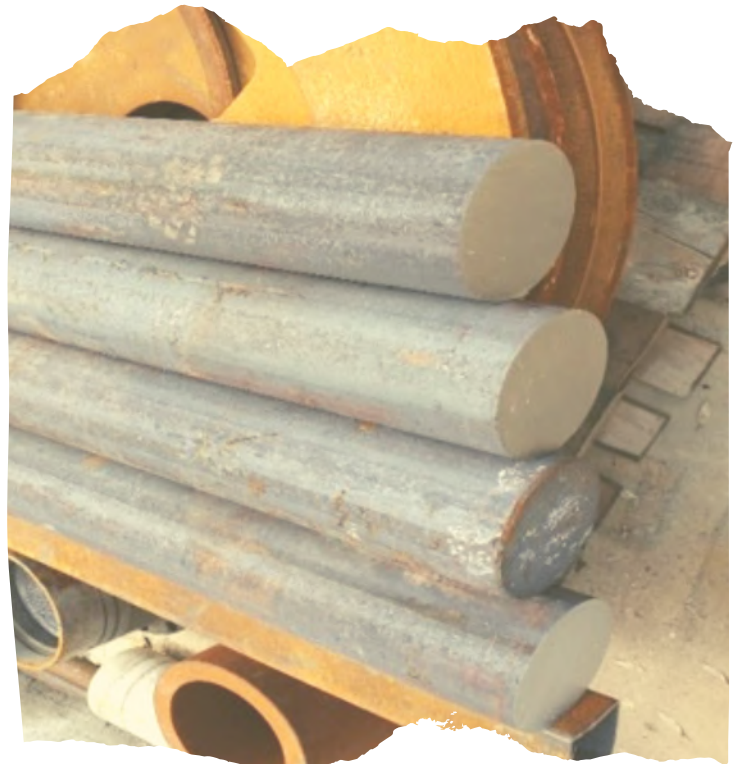
*hardening*



# Raw Materials



- As incoming control ,dimensional and NDT test are normally performed on the materials by third party independet companies.
- Materials grades are normally used as follows:
  - Metal Sheet St52, St37
  - Bar, Forging 4140, 4320, 4340, 1050, CK45, 8620, 17CrNiMo6
  - Steel pipe St52
  - Casting GS60, GGG40 -50 – 60 – 70 – 80 – 90 ,GG25 – 39
  - Stainless steel sheet and casting 304, 316, 310, HARDOX 500 -550





# Outsourced Processes

All the above outsourced processes are supported by reliable local supplier.

- Ultrasonic Testing
- Radiographic Testing
- Special Heat Treatments
- Chrome Covering
- Laboratory Tests
- Calibration

**Cesimak is able to 3D dimension control and hardness control by their Internal Quality Control Department.**

## Surface treat , Drilling and 3d Control Process



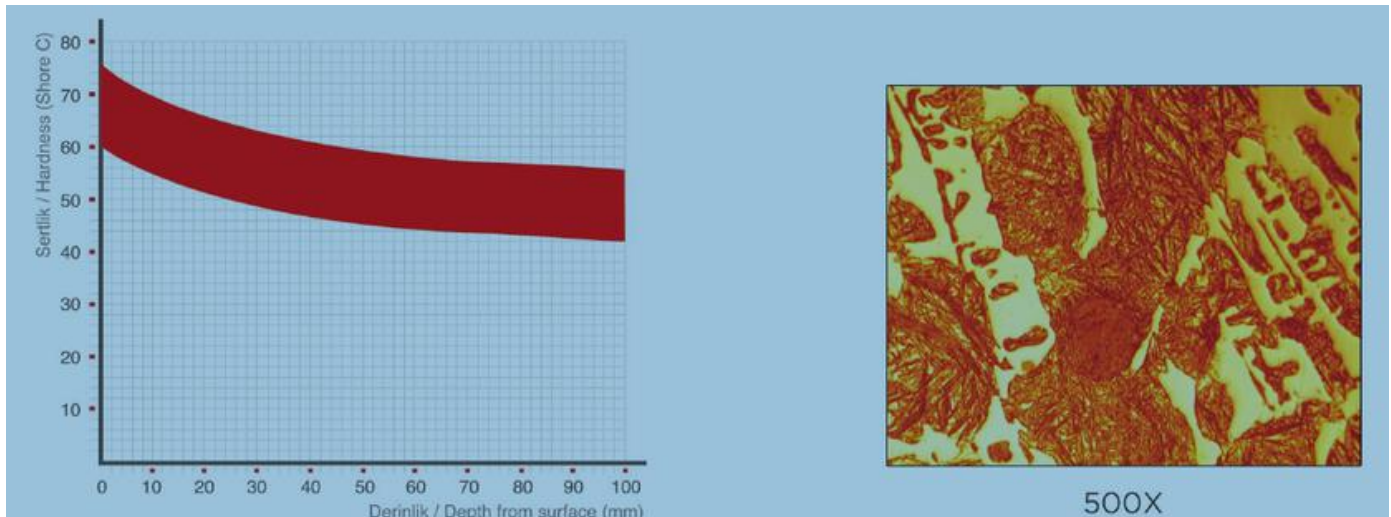
# Roller

In the iron and steel industry, besides equipment and other spare parts manufacturing, our company also manufacturing rollers.

According to the materials used, we produce rolls from stainless steel , rolls AND Ring rolls from Forging Alloysteel (capacity Ø 1000 – 1200 and 20 – 22 ton ) and rolls from Spheridol Cast Iron (capacity max.Ø1400, max.lenght 6000, max.weight 22 ton ) . We supply cast iron and forging steel materials from the domestic market, and stainless steel materials from the Far East and European market. We provide the necessary NDT controls and dimensional controls from 3rd party inspector such as TUV ,BV according to our Quality Plan. It is possible to produce Spheridol Cast Iron rolls used the way as centrifugal or gravity casting according to the project.

To give more detailed information as casting material, this class called as Acicular because of bainite and martensite within its microstructure, exhibits a much higher abrasion resistance compared to Pearlitic rolls through high Nickel and Molybdenum content in its alloy. Our all Acicular alloys have been tempered for a long time in low temperatures. This heat treatment tempers martensite and converts unconverted residual austenite and thereby eliminates conversion stresses without changing wearing resistance and hardness and increases mechanical strenght and fracture toughness in percent of 50 to 80%. While bainitic structured Spheridol Cast Iron is providing very good performance in light profile and angle passes, Acicular structured ones ensure very high performance in Rod and Wire Rod Rolling Mills and Slitting and all other Rolling mills ensure very high performance in Finish group position.

HARDNESS RANGE (SHC)		C	Si	Mn	Cr	Ni	Mo	Cu	TENSILE STRENGTH (N/mm2)	BENDING STRENGTH (N/mm2)
58	63	3,3-3,7	0,7-1,40	0,1-0,7	0,5-1,5	3,0-4,0	0,4-0,8	-	500-700	750-1000
63	68	3,3-3,7	0,7-1,40	0,1-0,7	0,5-1,5	3,0-4,0	0,4-0,8	-	500-700	750-1000
68	73	3,3-3,7	0,7-1,40	0,1-0,7	0,5-1,5	3,0-4,0	0,4-0,8	-	500-700	750-1000
70	75	3,3-3,7	0,7-1,40	0,1-0,7	0,5-1,5	3,0-4,0	0,4-0,8	-	500-700	750-1000







# CESİMAK

## 2020 CATALOGUE



[www.cesimak.com](http://www.cesimak.com)



@cesimak\_demircelik



/company/cesimakdemircelik



info@cesimak.com



0090 232 877 02 72

*K.O.S.B Kemalpaşa Asfaltı Üzeri  
4. Çıkma. No:3 Kemalpaşa / İZMİR  
TURKEY 35730*